



AST EXHIBITS

NO STORY LEFT UNTOLD

2630 TAFT AVENUE

ORLANDO, FL 32804

PHONE: 407.481.9291

FAX: 407.481.9230

WWW.ASTEXHIBITS.COM

*"If history
were taught
in the form
of stories,
it would never
be forgotten."*

- Rudyard Kipling

SFSM Exhibit Construction Progress Report 04/29/2013

***"Bit by bit, putting it together...
Piece by piece, only way to make a work of art.
Every moment makes a contribution,
Every little detail plays a part.
Having just the vision's no solution,
Everything depends on execution,
Putting it together, that's what counts."***

**- Stephen Sondheim
Sunday in the Park with George**

Less than two weeks from our load-in date, things are starting to come together. There is still a lot to do, but it is exciting to see elements being finished and readied for shipping.

Things are happening almost as fast as I can generate updates about them. There are shipments arriving daily with graphics, electronics, hardware, packing material, and more. Bit by bit, things are coming together.

This update will highlight progress on the Everglades exhibit, the Conservation lab, the Science Showcase, and the graphics for the tank railings.

We remain committed to the details, execution, and putting it all together for the South Florida Science Museum and the children and community of West Palm Beach Florida.

Scott Metelko
President
AST Exhibits



This is Piper. She gets bored waiting for things to get done. She prefers action and I can't say that I disagree.



Meet Bill. He is sculpting the cypress log that is part of the everglades exhibit. It started as a block of foam which was sculpted into the proper shape. Then, parts of it were carved away so that we could add structure. We needed that structure to securely mount it to the exhibit and also to have some way to mount the otter.



After the structure was added, the log was coated with a combination of a stucco finish and an epoxy that was sculpted for surface details. Then, several layers of paint give it a realistic and weathered look. The final product is very convincing.





AST EXHIBITS

NO STORY LEFT UNTOLD

2630 TAFT AVENUE | ORLANDO, FL 32804
PHONE: 407.481.9291 | FAX: 407.481.9230

WWW.ASTEXHIBITS.COM

Right are cypress knees sculpted and in the process of being painted. Below are some finished knees which will be applied to the Everglades terrain during installation.



Below are fungi in various states of finish. They will be applied to the fallen cypress log during installation.





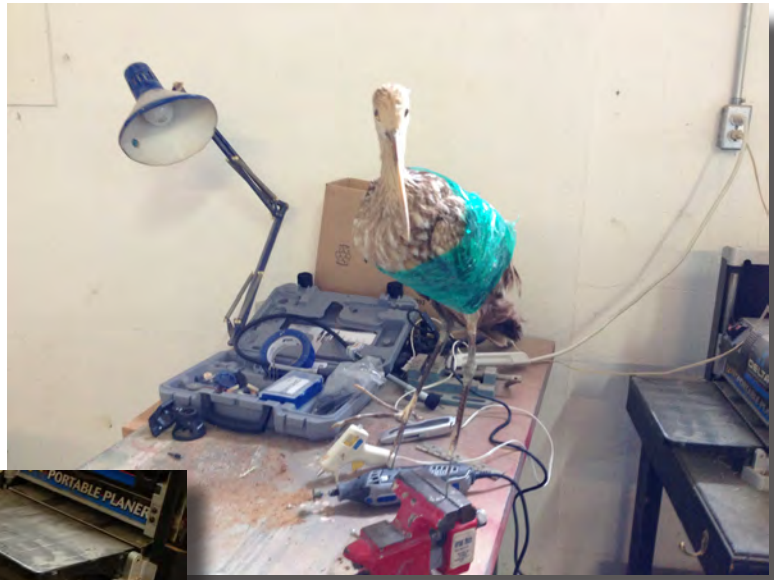
AST EXHIBITS
 NO STORY LEFT UNTOLD
 2630 TAFT AVENUE | ORLANDO, FL 32804
 PHONE: 407.481.9291 | FAX: 407.481.9230
 WWW.ASTEXHIBITS.COM



Bill is applying a stucco type product that is tinted and mixed with two different types of sand. After this coat dries, we will apply more paint to give it additional depth and a clear epoxy that will make it look wet where appropriate.

Right are the finished terrain pieces. They have been removed from the exhibit and are ready to be wrapped for shipping. Another piece of the puzzle completed.





Pictures of one of two studios that Mike set up to work on the taxidermy provided by SFSM. The specimens were old and worn in places and in need of some care. One of the birds was missing a foot, the otter was missing half of his foot, and other minor repairs were needed.



Left. I caught Mike in his other "studio" gingerly repairing the leg of a bird with an eco-friendly sculpting epoxy. He seems happy doing this kind of detailed work.



AST EXHIBITS
NO STORY LEFT UNTOLD
2630 TAFT AVENUE | ORLANDO, FL 32804
PHONE: 407.481.9291 | FAX: 407.481.9230
WWW.ASTEXHIBITS.COM

Construction of the Conservation Lab is well underway. The structure is finished and we have begun to add the finishes.





AST EXHIBITS

NO STORY LEFT UNTOLD

2630 TAFT AVENUE | ORLANDO, FL 32804
PHONE: 407.481.9291 | FAX: 407.481.9230

WWW.ASTEXHIBITS.COM



Here is the work so far on the Science Showcase. The finishes are almost complete. Once they are complete, we will add the LED lighting and get them ready for shipping.



AST EXHIBITS

NO STORY LEFT UNTOLD

2630 TAFT AVENUE | ORLANDO, FL 32804

PHONE: 407.481.9291 | FAX: 407.481.9230

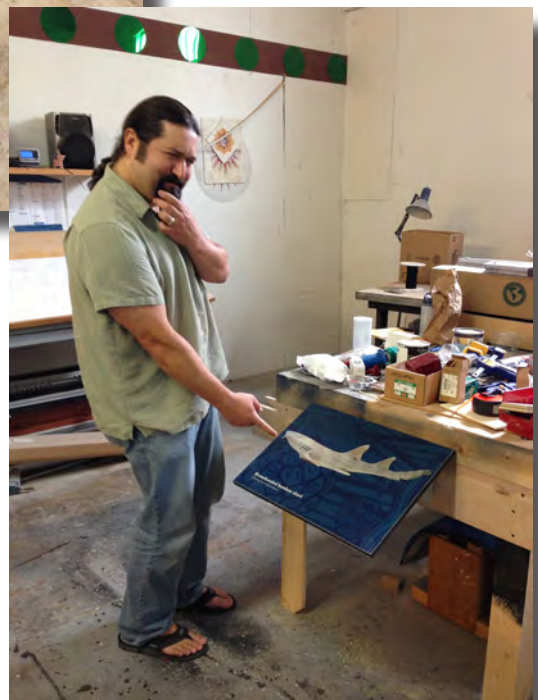
WWW.ASTEXHIBITS.COM



The graphics for the circular tank reader rails have arrived and are being laminated to the plywood substrates.

Right Mike is testing the jig that he used to mount the reader rail graphic brackets. Is it me or does he seem a little bit confused about something?

Not to worry though, installation of the brackets went well under his excellent leadership.





Right are vinyl graphics and vitrines for the Conservation Lab.



Above, Marc applying graphics to curved reader rails.



Above are reader rail graphics being readied for shipping.



Left are boxes of plants for the Everglades exhibit being sorted and readied for shipment.