



2630 TAFT AVENUE

ORLANDO, FL 32804

PHONE: 407.481.9291

FAX: 407.481.9230

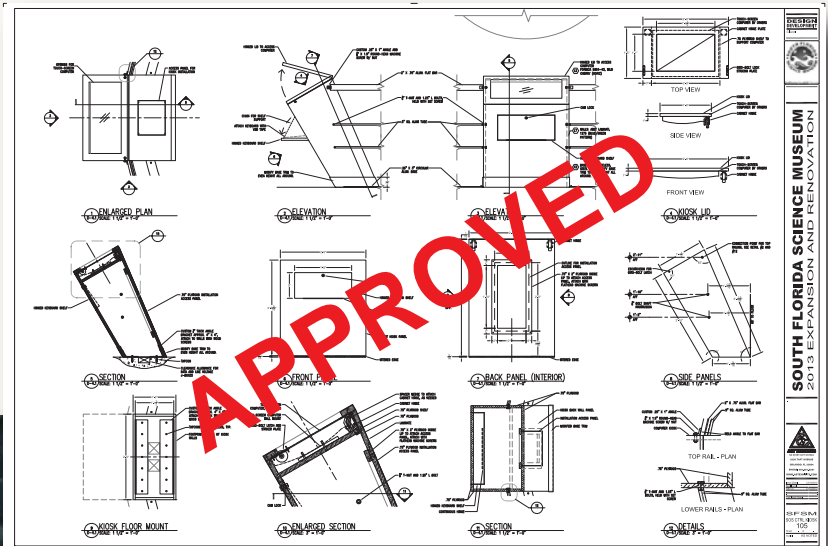
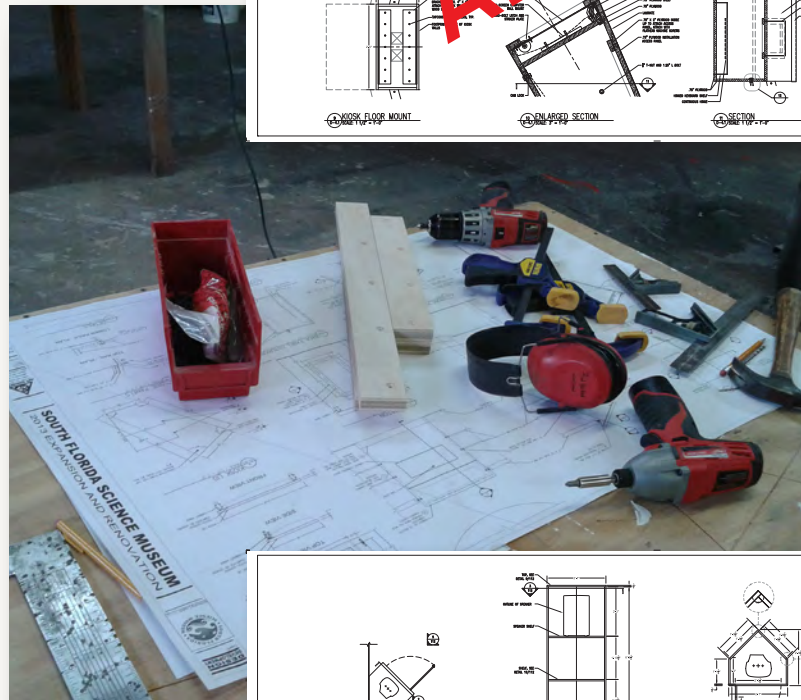
WWW.ASTEXHIBITS.COM

*"If history
were taught
in the form
of stories,
it would never
be forgotten."*

— Rudyard Kipling

SFSM Exhibit Construction Progress Report 01/07/2013

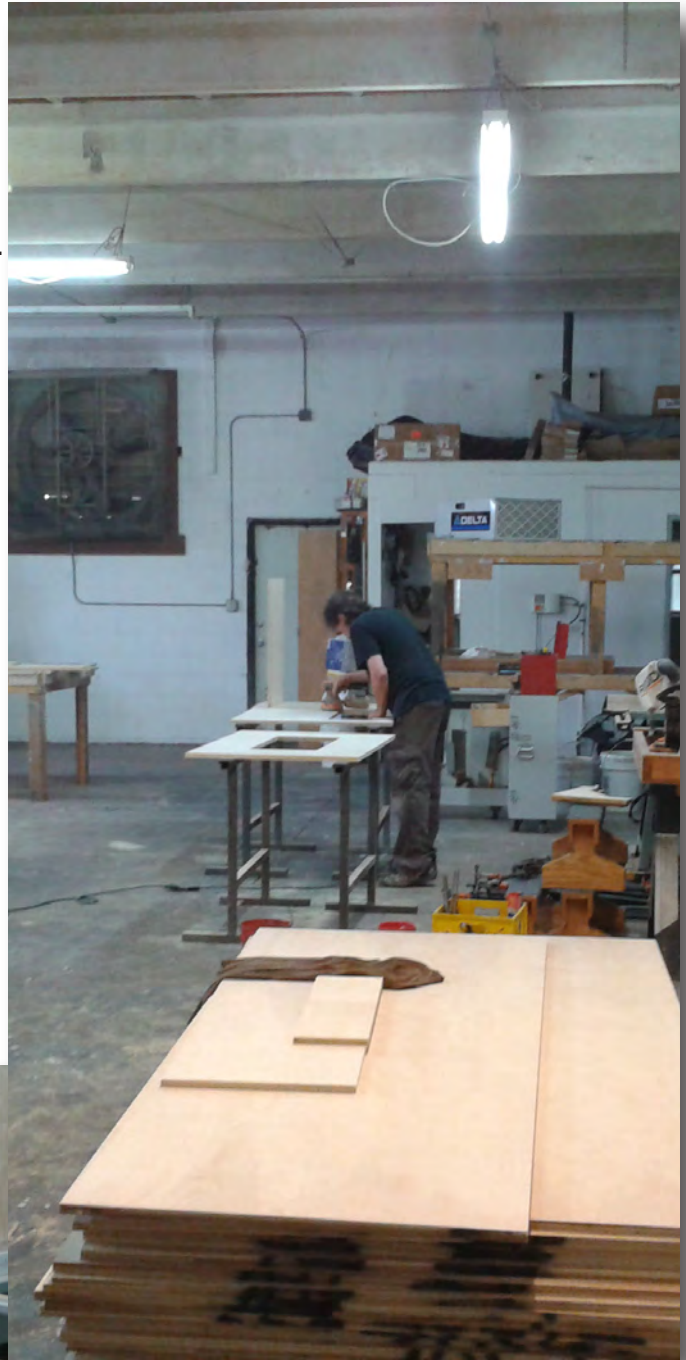
The plans are made, the drawings have been approved, the material is delivered, the crew is ready and it is time to start construction on the exhibits for the South Florida Science Museum in West Palm Beach, Florida.





Construction began once we received a pallet of really nice Birch Plywood.

Because we are going to deliver them in a few weeks, we have put all of our resources into fabricating the Science on a Sphere elements first. The picture below shows the SOS kiosk just beginning to take shape. The SOS railing is being fabricated in another facility and we should have some photos later in the week.





The picture to the right shows the rough box for the SOS kiosk completed and awaiting laminate. Note: it is upside down. The picture below shows the NW SOS Closet.





The SW SOS closet.





SOS closets.



More to come soon...